



Gutierrez

---

GROUP

MULTI-FAMILY OFFICE

WELCOME TO YOUR  
COLOMBIAN FAMILY



# *Colombian Timber*

*- forestry investments -*

**A SOCIALLY AND  
ENVIRONMENTALLY  
SUSTAINABLE  
INVESTMENT**





[WWW.COLOMBIANTIMBER.COM](http://WWW.COLOMBIANTIMBER.COM)

*VIDEO:* <https://youtu.be/W0v2G-wx6GQ>



# INVESTMENT TIMELINE

BUY/RENT

PLANT

MAINTAIN

HARVEST

SELL



LOW FARMLAND  
PRICES

ACACIA &  
EUCALYPTUS

7 YEARS

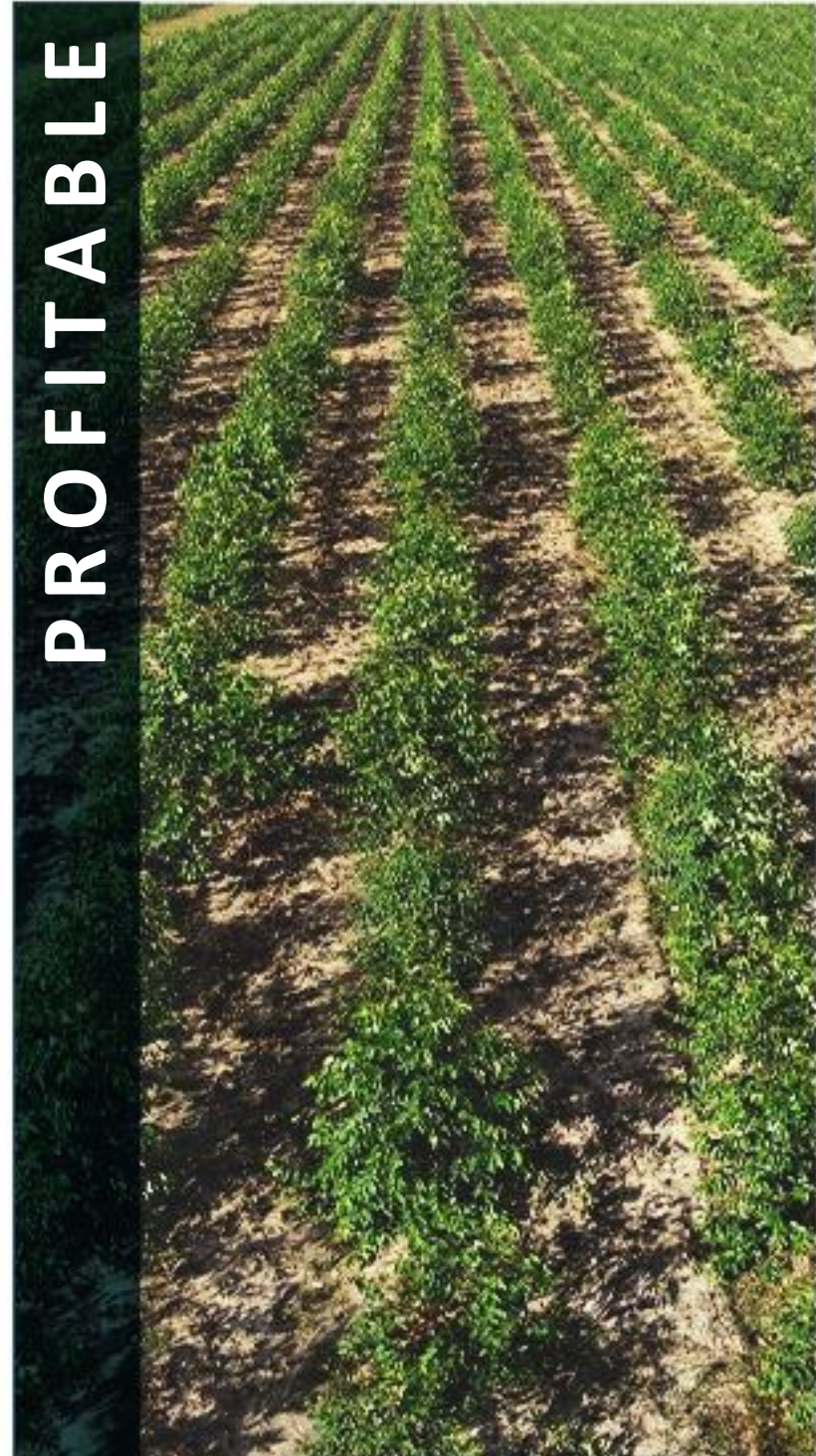
CONVERT WOOD  
INTO BIOMASS

GLOBALLY



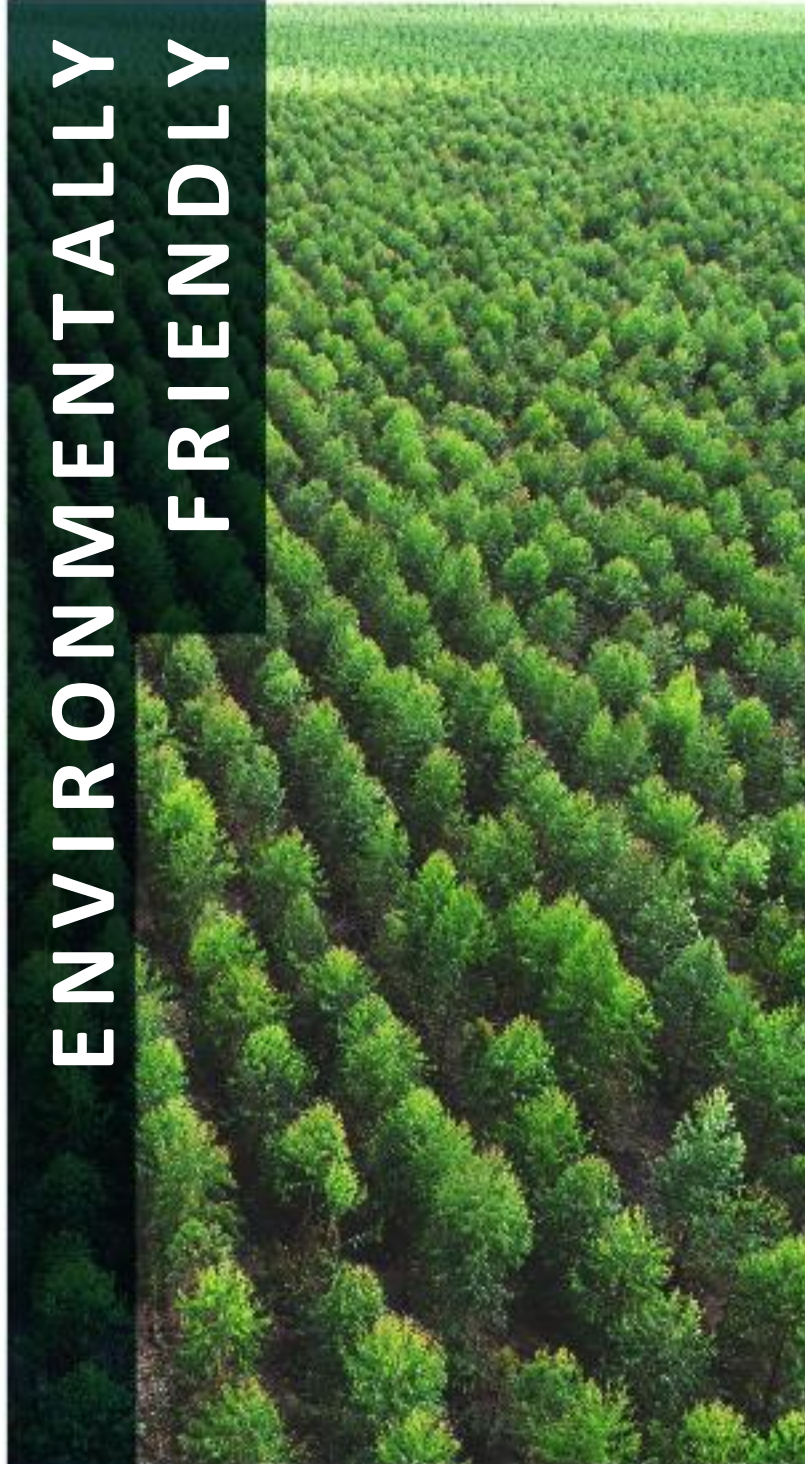
# WHY IS THIS A UNIQUE OPPORTUNITY?

PROFITABLE



ROI 16%+

ENVIRONMENTALLY FRIENDLY



40.000+ tons of carbon dioxide captured per year

SOCIAL



300+ direct jobs generated

SUSTAINABLE



Biomass

RESIDENCY



Colombian visa applicable

# MODELS



## CROWDFUNDED

**CT1**

2016

**CT2**

2017

**CT9**

2020



## INDIVIDUALLY FUNDED

**CT3**

2018

**CT4**

2018

**CT5**

2018

**CT6**

2018

**CT7**

2018

**CT8**

2019



CT1

*Planted 2016*



CT2

*Planted 2017*





CT3

*Planted 2018*



CT4

*Planted 2018*



CT5

*Planted 2019*



CT6



CT7



CT8

*Planted 2019*



CT  
PORT

COLOMBIAN  
TIMBER PORT

Gutierrez  
GROUP

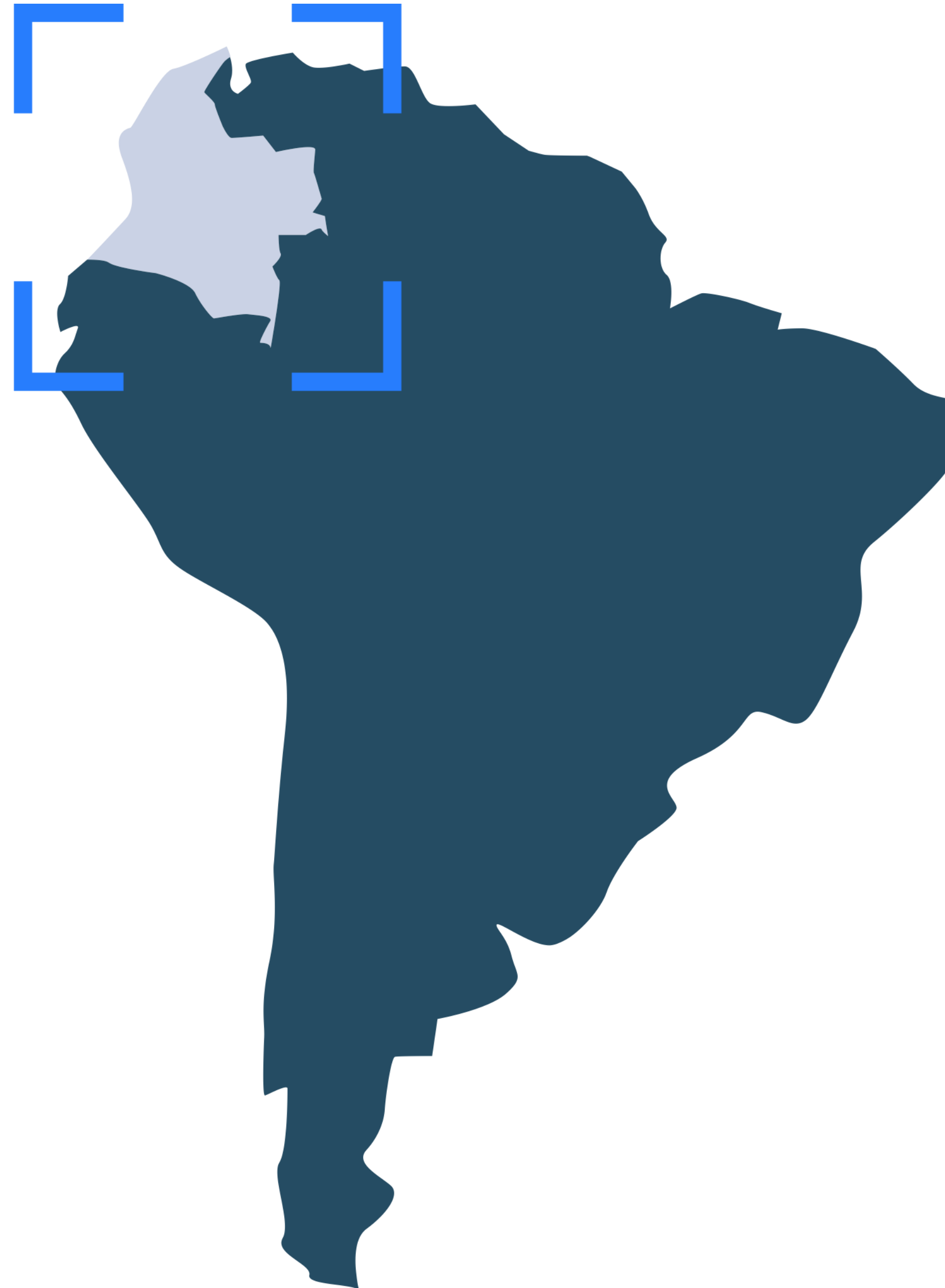
A photograph of a tree plantation. The image shows two long, parallel rows of young trees with dense green foliage, planted in a gravel bed. A gravel path runs between the rows, leading towards the horizon. The sky is overcast and grey. In the bottom right corner, there is a logo for 'Gutierrez GROUP'.

***STARTED  
PLANTATIONS  
IN 2009***



***160.000+***  
***HECTARES***



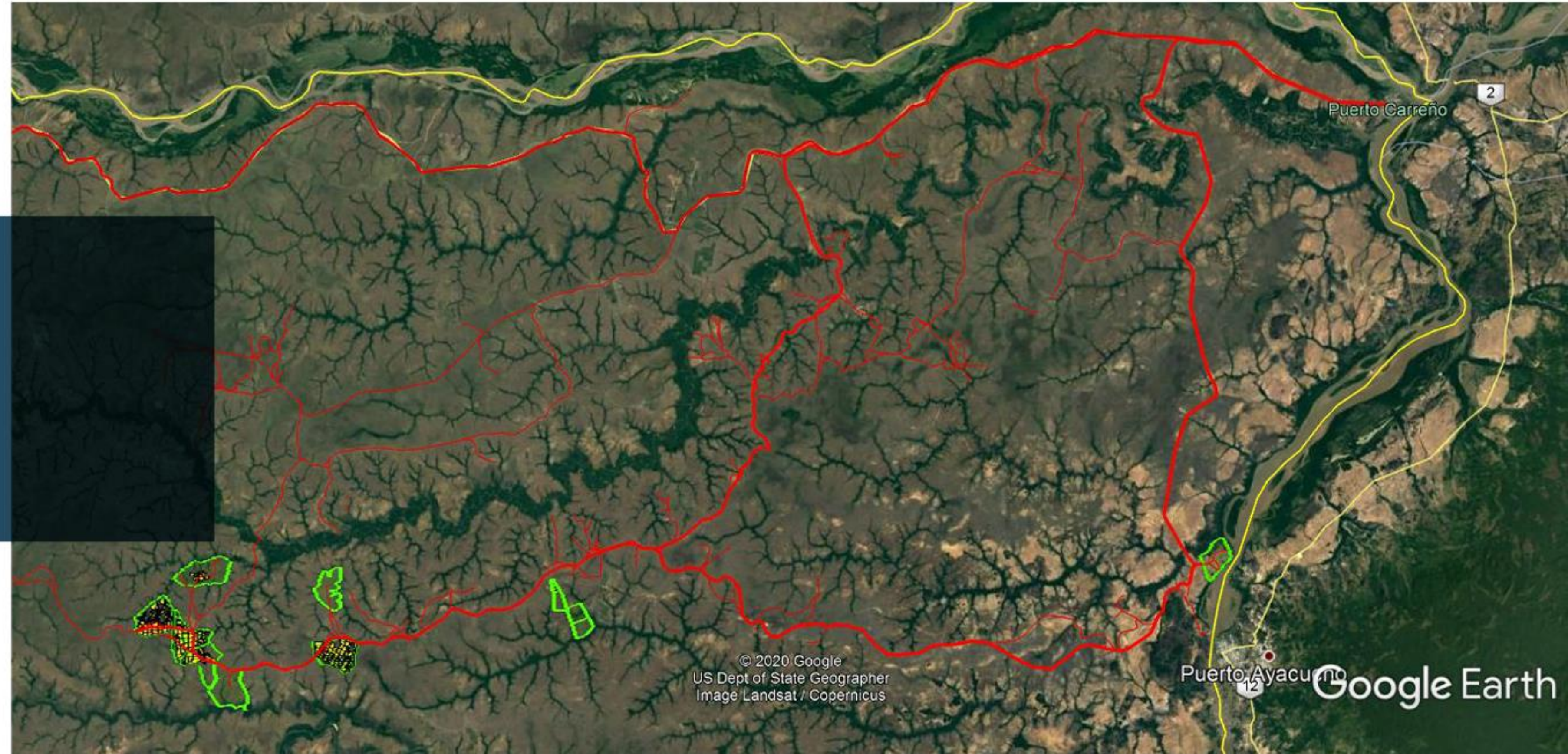


**COLOMBIA**  
VICHADA

*WHERE  
IS IT?*

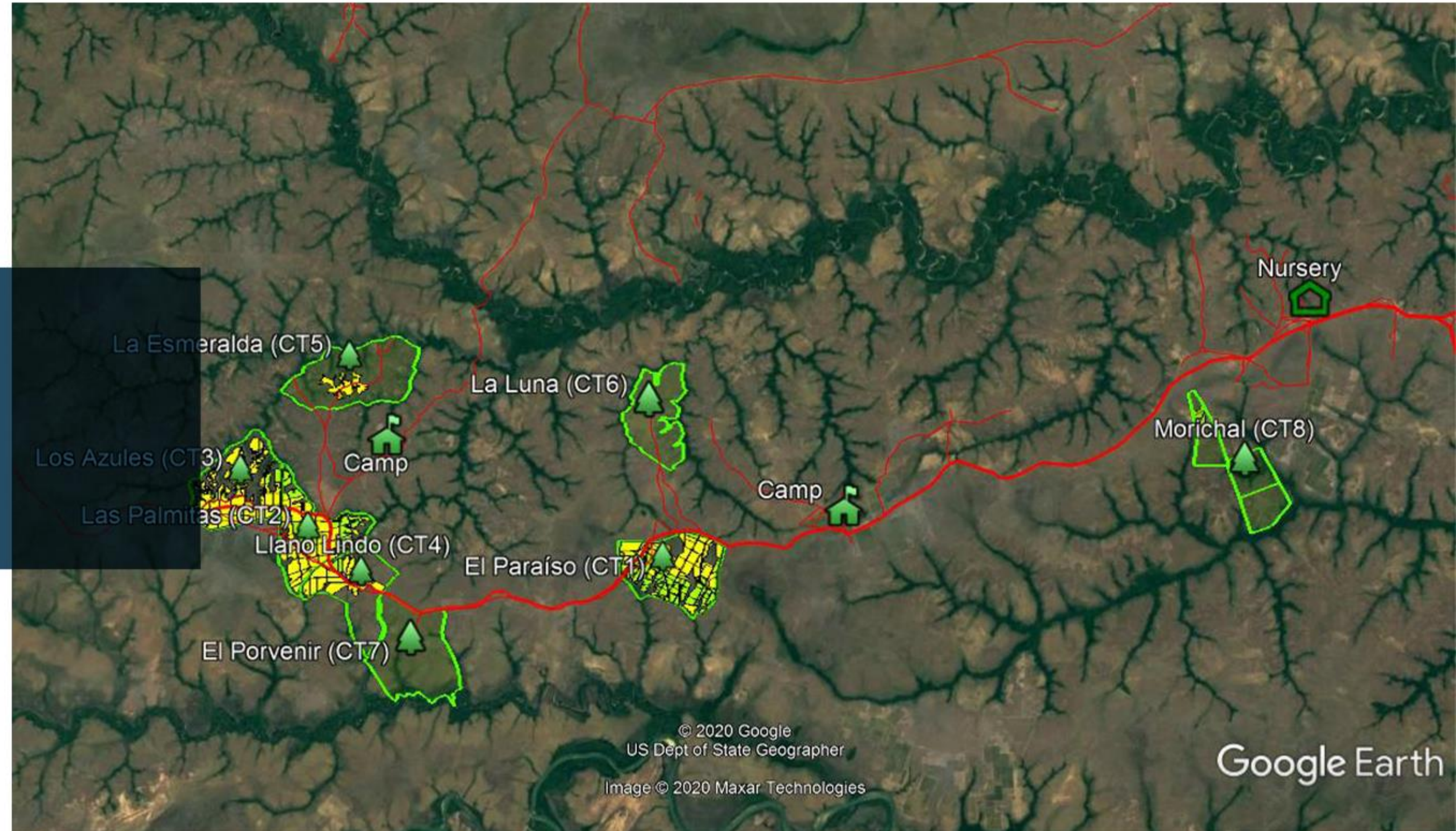


*WHERE IS  
IT?*



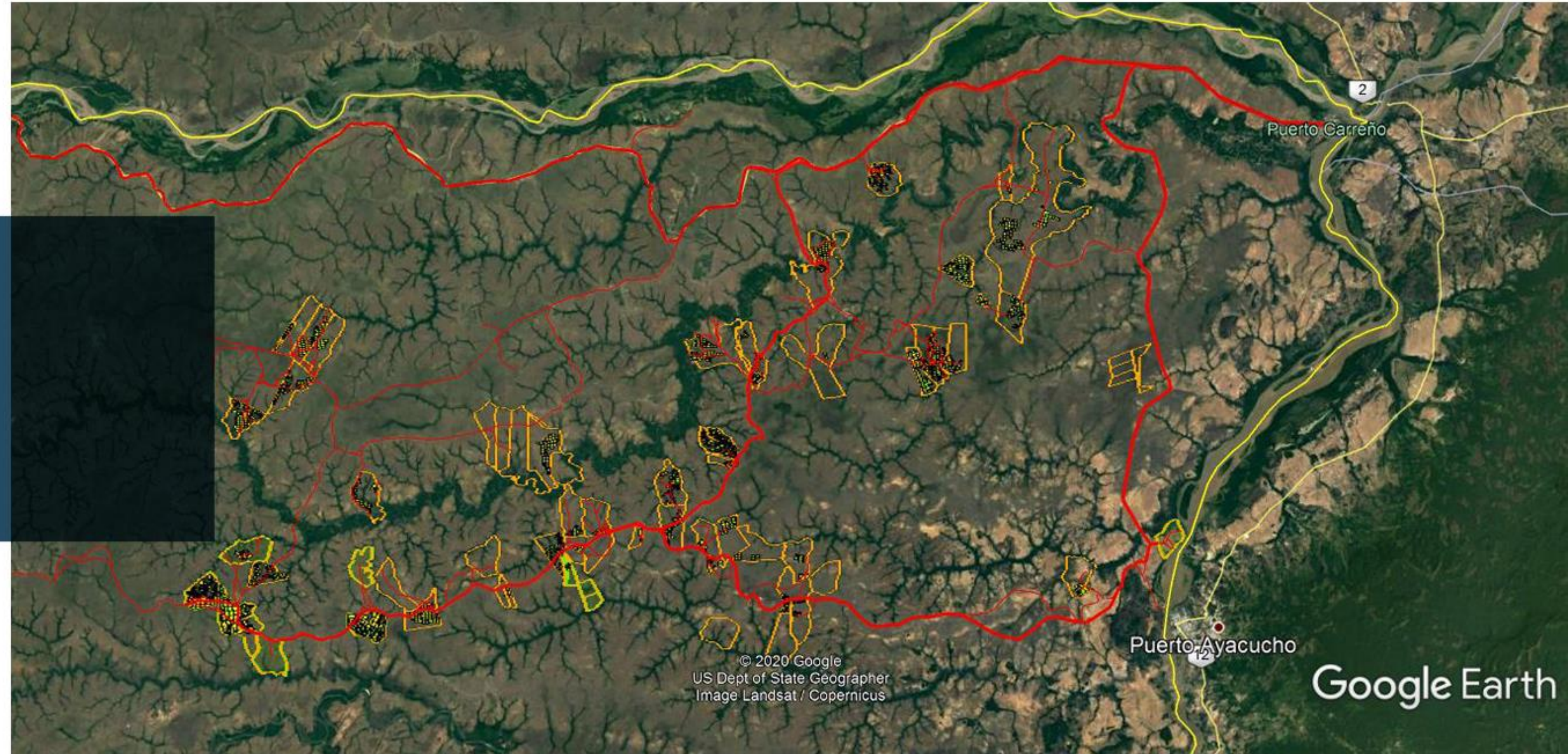


# WHERE IS IT?





*WHERE IS  
IT?*





## WHAT WE HAVE ACHIEVED

| PROJECT      | TYPE                | YEAR | HECTARES     | ACRES         | APROX. TREES     |
|--------------|---------------------|------|--------------|---------------|------------------|
| CT1          | Crowdfunded         | 2016 | 1,198        | 2,960         | 950,238          |
| CT2          | Crowdfunded         | 2017 | 1,076        | 2,659         | 883,245          |
| CT3          | Individually Funded | 2018 | 1,238        | 3,059         | 934,067          |
| CT4          | Individually Funded | 2018 | 940          | 2,323         | 373,932          |
| CT5          | Individually Funded | 2019 | 1,292        | 3,193         | 133,300          |
| CT6          | Individually Funded | TBD  | 851          | 2,103         | -                |
| CT7          | Individually Funded | TBD  | 1,286        | 2,179         | -                |
| CT8          | Individually Funded | 2019 | 903          | 2,230         | 37,324           |
| CT PORT      | To Be Defined       | 2021 | 818          | 2,021         |                  |
| <b>TOTAL</b> |                     |      | <b>9,602</b> | <b>23,727</b> | <b>3'312,106</b> |



## *INTRODUCING COLOMBIAN TIMBER IX*

| <b>P R O J E C T</b>  | <b>C T I X</b> |
|-----------------------|----------------|
| YEAR                  | 2020           |
| Area (Ha)             | 400            |
| Area (Acres)          | 988            |
| Trees Planted         | 533,200        |
| Total Cost (USD)      | \$1'200,000    |
| Min. Investment (USD) | \$40,000       |
| Units Available       | 11             |
| Projected IRR         | 16%+           |





# ***QUESTIONS?***

***FELIPEGUTIERREZ@GUTIERREZGROUP.COM.CO***

***WWW.COLOMBIANTIMBER.COM***

***WWW.GUTIERREZGROUP.COM.CO***



***THANKS!***





**10 YEARS OF EXPERIENCE · 1,800+ CLIENTS · 350+ INVESTORS**

WE CARE ABOUT YOU

**CONTACT US**

GUTIERREZGROUP.COM.CO